

0CNP2-M57500EN

Directions for the Parts Catalog.

1. This Parts Catalog shows both standard and optional parts.
2. Parts may change without prior notice.
3. The following is an example of the Parts Catalog format.

REF.	LEV.	PARTS NO.	DESCRIPTION	Q'TY						I	R
				(A)	(B)	(C)	(D)	(E)	(F)		
1	1	729595-51390	FUEL INJECTION PUMP	1	1	1	1	1			1
1-1	1	729595-51391	FUEL INJECTION PUMP	1	1	1	1	1		N	1
		(A=E00185) (B=E00200)									
3	2	26022-060162	SCREW M 6X 16	9	9	9	9	9			
3-1	2	26022-060162	SCREW M 6X 16	4	4	4	4	4		K	
		(A=E00156) (B=E00156) (C=E00156) (D=E00156) (E=E00156)									
4	2	129470-51040	CAMSHAFT	1	1	1	1	1			
5	2	122710-51050	BEARING, ROLLER	2	2	2	2	2			
6	2	129470-51060	RETAINER	1	1	1	1	1			

Remarks
(1) BOOST COMPEMSATOR TYPE. OPTIONAL PART, TO E00155,(4JH-DT, 4JH-DTZ

① Ref. No.

The Ref. No. listed may not be in accordance with the illustration Ref. No.

(Ex.) Illustration No.

List Ref No.

1

1

(Before change)

1-1

(After change)

For interchangeable symbols N, R and K, illustrations for new parts may be abbreviated.

② Lev. (Level)

Level indication

The numbers below indicate the level of relativity towards the main part.

1 ----- Main parts (Assembly parts)

2 ----- Sub component included in " 1 ".

3 ----- Sub component included in " 2 ".

Note) Parts that are not for sale are partially illustrated but not listed.

③ Interchangeability Symbol

When a part change takes place, one of the following interchangeability symbols is indicated beside the part.

Symbol	Interchangeability	Contents note
N	Old $\begin{matrix} \leftarrow \text{Yes} \\ \text{No} \rightarrow \end{matrix}$ New	New Part is interchangeable for Old Part but Old Part is not interchangeable for New Part.
Q	Old $\begin{matrix} \leftarrow \text{No} \\ \text{Yes} \rightarrow \end{matrix}$ New	New Part is not interchangeable for Old Part but Old Part is interchangeable for New Part.
R	Old $\begin{matrix} \leftarrow \text{Yes} \\ \text{Yes} \rightarrow \end{matrix}$ New	New/ Old Parts are both interchangeable.
S	Old $\begin{matrix} \leftarrow \text{No} \\ \text{No} \rightarrow \end{matrix}$ New	New/ Old Parts are both not interchangeable.
W		Part newly added.
Z		Part discontinued.
F		Not interchangeable by a single part but interchangeable together with related parts.
K		Changes only for used parts quantities.

④ Effective Machine No.

When a part changes, the effective Machine No. will be indicated in the (A)-(F) column.

Product Symbol	Product No.	Product Symbol	Product No.
C	Clutch No. Compressor No.	F	Machine No. (Agricultural Equip.)
D	Drive No.	M	Machine No.
E	Engine No.		

Note 1) A date may follow the symbol. (Ex.) 1996.01

Note 2) "XXXXX" and "ZZZZZ" are for parts that could not be predicted or for engine models that could not be identified.

Note 3) (A=E00185) is the E (Engine Serial Number) for the column (A) model (in this case 4JH-DT) after the parts design change.

⑤ Remarks

Figures or alphabets (symbols) are entered in the remarks column.

The comments (remarks) on parts that are indicated at the bottom of the illustration are the same symbols as those stated above.

PAINTING COLOR

SECTION	PAINTING COLOR	COLOR SPRAY	MAIN PARTS	COLOR CODE (FIGURE)
Main body	YANMAR Red 1	T:0 R:-9:0 4:0:0:0:0:3	Handle frame CMP	5 0
Main body	YANMAR White	T:0 R:-9:0 2:5:0:0:0:2	Fender Handle CMP	1 4
Main body	YANMAR Plain silver M2	T:0 R:-9:0 3:1:0:0:0:3	Cover, in side CMP Engine frame CMP	1 9

Please surely use **YANMAR** Genuine color spray any **YANMAR** agricultural machines.

Given painting color may be altered for improvement, etc. without prior notice:

Corresponding table of the machine and engine

Machine			Engine	
Model	PC-No.	Serial No.	Model	PC-No.
YK682C	0CNP2-G57500	~F004770	GA160E-SKA	0CNP2-G40201
		F004771~	GA160E-ASKA	0CNP2-G40201
		Engine for spare use only	GA160E-SKA1	0CNP2-G40201
YK782C		~F002914	GA180E-SKC	0CNP2-G55900
		F002915~	GA180E-ASKC	0CNP5-G64800

Contents

Fig. No. Fig. Name

PULLEY & TENSION SECTION

1. ENGINE MOUNTING & PULLEY
2. MAIN PULLEY & TENSION

TRANSMISSION UNIT

3. TRANSMISSION CASE
4. MAIN,COUNTER & REDUCT'N SHAFTS
5. FINAL SHAFT & AXLE
6. MAIN CHANGE
7. SIDE CLUTCH

WHEEL SECTION

8. FENDER
9. TIRE(ADDITIONAL ITEM)

HANDLE SECTION

10. HANDLE COLUMN(MOVE-ROUND)
11. HANDLE
12. CONTROL LEVER 1
13. CONTROL LEVER 2

ENGINE FRAME SECTION

14. ENGINE FRAME & HITCH
15. BELT COVER
16. BONNET

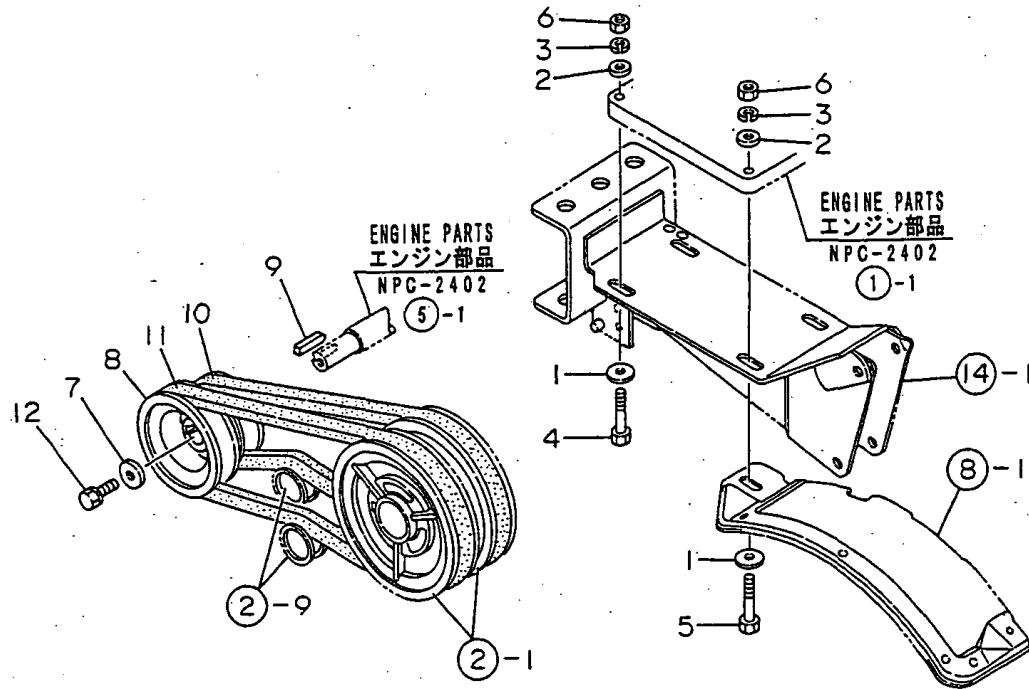
Fig. No. Fig. Name

LABELS & ACCESSORIES SECTION

17. ELECTRICAL PARTS
18. LABELS
19. LABELS & ACCESSORIES(ADD.ITEM)

Fig.1. ENGINE MOUNTING & PULLEY

1. ENGINE MOUNTING & PULLEY



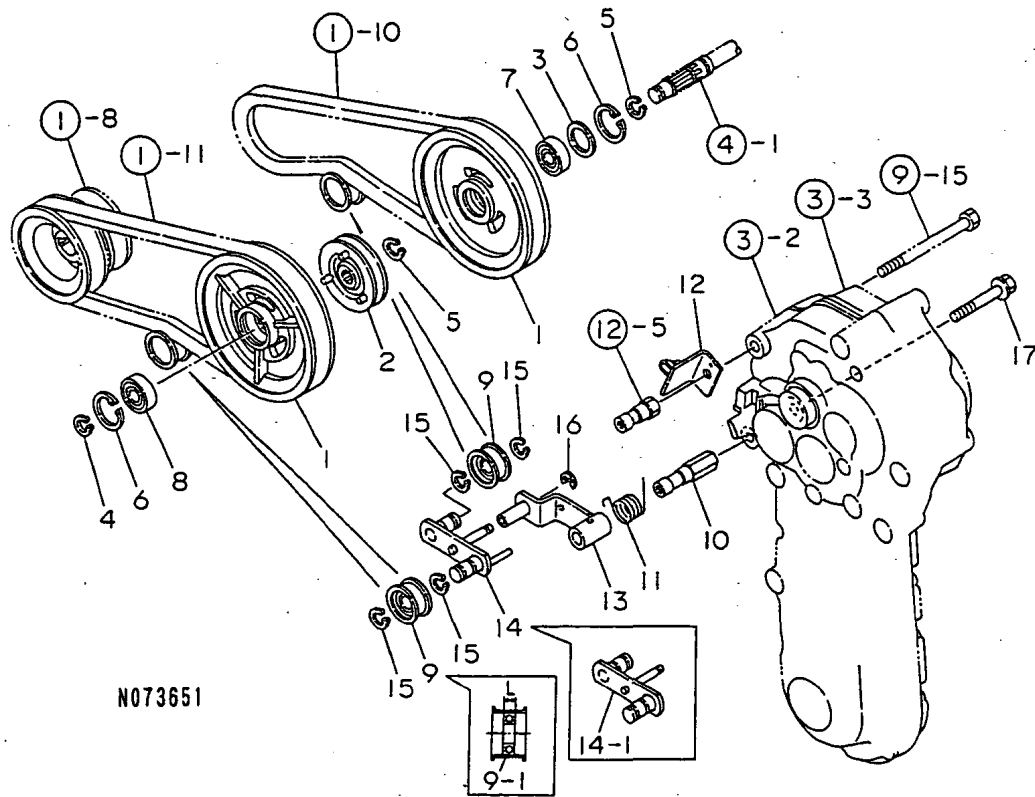
(A)=YK682C
(B)=YK682G
(C)=YK782C

(D)=YK782G
(E)=YK682P,FL
(F)=YK782P,FL

No.	Lev.	Parts No.	Description	Q'ty						I	R
				(A)	(B)	(C)	(D)	(E)	(F)		
1	1	1D1140-11420	WASHER,PULLEY	4	4	4	4	4	4		
2	1	22137-080000	WASHER, 8	4	4	4	4	4	4		
3	1	22217-080000	WASHER, SPRING 8	4	4	4	4	4	4		
4	1	26117-080402	BOLT M 8X 40	2	2	2	2	2	2		
5	1	26117-080452	BOLT M 8X 45	2	2	2	2	2	2		
6	1	26717-080002	NUT, M8	4	4	4	4	4	4		
7	1	1D1140-11420	WASHER,PULLEY	1	1	1	1	1	1		
8	1	1A2019-12000	PULLEY 582,ENGINE	1	1	1	1	1	1		
9	1	22512-050300	KEY, 5X 30	1	1	1	1	1	1		
10	1	25123-003701	V-BELT, B37H	1	1	1	1				
10-1	1	1A2009-15000 (A=F000843)	V-BELT SP.H SB37 (B=F000843)	1	1	1	1	1	1	1	N
10-2	1	1A2009-15001 (A=FXXXXXX)	V-BELT,W500 SB37 (B=FXXXXXX)	1	1	1	1	1	1	1	N
11	1	25123-003801	V-BELT, B38H	1	1	1	1				
11-1	1	1A2001-15000 (A=F000843)	V-BELT SP.H 8B38 (B=F000843)	1	1	1	1	1	1	1	N
11-2	1	1A2001-15001 (A=FXXXXXX)	V-BELT,W500 SB38 (B=FXXXXXX)	1	1	1	1	1	1	1	N
12	1	26013-080164	BOLT M 8X 16	1	1	1	1	1	1		
12-1	1	26013-080162 (A=FZZZZZ)	BOLT, M8X 16 (B=FZZZZZ)	1	1	1	1	1	1	1	R
			(C=FZZZZZ)				(D=FZZZZZ)		(E=FZZZZZ)		(F=FZZZZZ)

Fig.2. MAIN PULLEY & TENSION

2. MAIN PULLEY & TENSION



N073651

(A)=YK682C
(B)=YK682G
(C)=YK782C

(D)=YK782G
(E)=YK682P,FL
(F)=YK782P,FL

No.	Lev.	Parts No.	Description	Q'ty						I	R
				(A)	(B)	(C)	(D)	(E)	(F)		
1	1	1A2009-13300	PULLEY 154,MN.SHAFT	2	2	2	2				
1-1	1	1A2009-13301	PULLEY 154,MN.SHAFT	2	2	2	2	2	2	2	N
		(A=F000843)	(B=F000843)	(C=F000436)	(D=F000436)						
2	1	1A2009-13341	SHIFTER	1	1	1	1				
2-1	1	1A2009-13342	SHIFTER	1	1	1	1	1	1	1	R
		(A=FXXX)	(B=FXXX)	(C=FXXX)	(D=FXXX)						
3	1	1A1105-23210	LINER, 34X24.2X1.0	1	1	1	1	1	1	1	
4	1	22242-000150	RING, 15	1	1	1	1	1	1	1	
5	1	22242-000170	RING, 17	2	2	2	2	2	2	2	
6	1	22252-000350	RING, 35	2	2	2	2	2	2	2	
7	1	24104-060034	BEARING, BALL 6003UU	1	1	1	1	1	1	1	
8	1	24104-062024	BEARING, BALL 6202UU	1	1	1	1	1	1	1	
9	1	1E4060-10040	ROLLER,TENSION	2	2	2	2				1
9-1	1	1A2001-13050	ROLLER CMP,TENSION	2	2	2	2				S 1
		(A=F000237)	(B=F000237)	(C=F000201)	(D=F000201)						
9-2	1	1A2001-13051	ROLLER CMP,TENSION	2	2	2	2	2	2	2	N
		(A=FXXX)	(B=FXXX)	(C=FXXX)	(D=FXXX)						
10	1	1A2000-13100	NUT,TENSION	1	1	1	1	1	1	1	
11	1	1A2000-13190	SPRING,TENSION RETRN	1	1	1	1	1	1	1	
12	1	1A2000-13200	BRACKET COMPL.,WIRE	1	1	1	1	1	1	1	
13	1	1A2009-13510	ARM COMP.,TENSION	1	1	1	1	1	1	1	
14	1	1A2009-13540	ARM CMP,TENSION AUX.	1	1	1	1				
14-1	1	1A2001-13100	ARM CMP,TENSION AUX.	1	1	1	1	1	1	1	S
		(A=F000237)	(B=F000237)	(C=F000201)	(D=F000201)						
15	1	22242-000150	RING, 15	4	4	4	4	4	4	4	
16	1	22272-000060	RING, E- 6	1	1	1	1	1	1	1	
17	1	26137-100702	BOLT, M10X 70 PLATED	1	1	1	1	1	1	1	

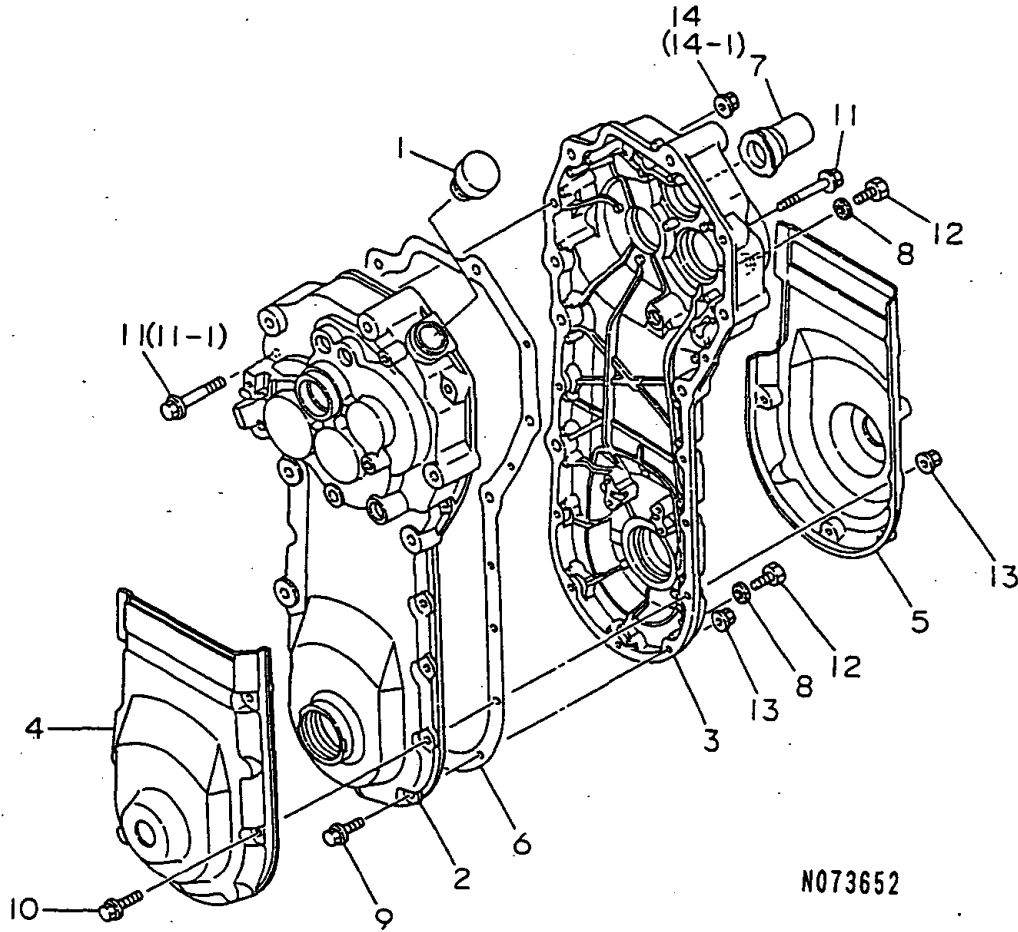
Remarks

(1)L= REFER.NO.9 11M/M,9-1 9M/M.

N:Old $\begin{matrix} \leftarrow \text{Yes} \\ \text{No} \end{matrix}$ New, Q:Old $\begin{matrix} \leftarrow \text{No} \\ \text{Yes} \end{matrix}$ New, R:Old $\begin{matrix} \leftarrow \text{Yes} \\ \text{Yes} \end{matrix}$ New, S:Old $\begin{matrix} \leftarrow \text{No} \\ \text{No} \end{matrix}$ New, W:Add, Z:Discontinued, F:Interchangeable by set, K:Q'ty Change

Fig.3. TRANSMISSION CASE

3. TRANSMISSION CASE



N073652

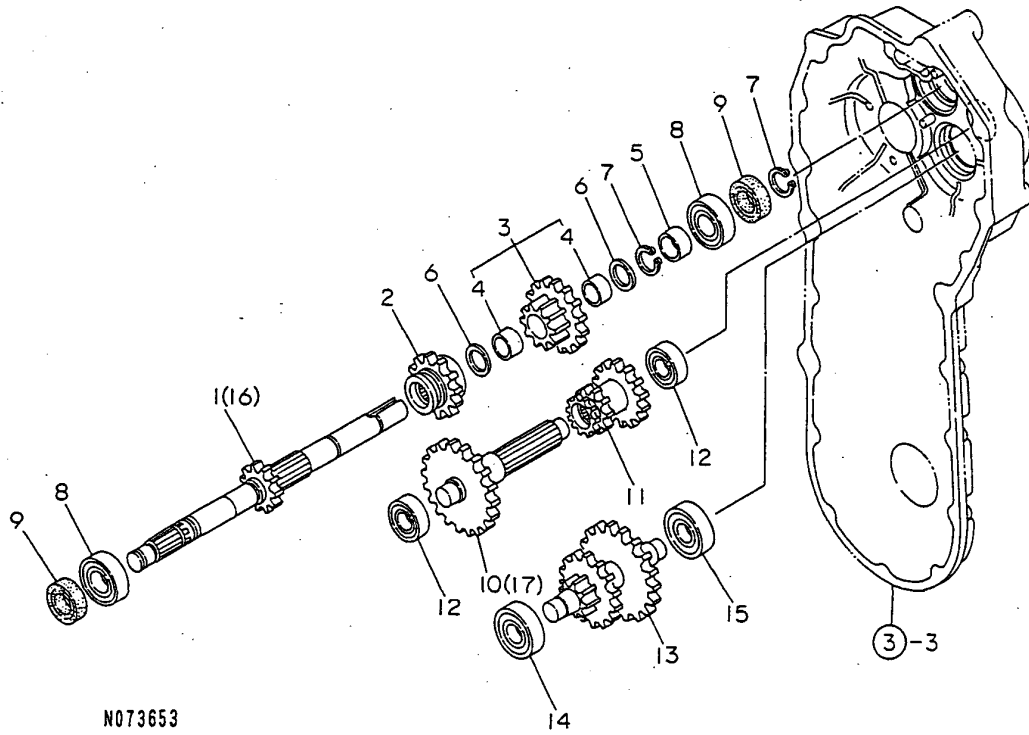
(A)=YK682C
(B)=YK682G
(C)=YK782C

(D)=YK782G
(E)=YK682P,FL
(F)=YK782P,FL

No.	Lev.	Parts No.	Description	Q'ty						I	R
				(A)	(B)	(C)	(D)	(E)	(F)		
1	1	1A1470-20090	CAP 35,OIL FILLER	1	1	1	1	1	1		
2	1	1A2000-21100	CASE L,TRANSMISSION	1	1	1	1	1	1		
3	1	1A2000-21110	CASE R,TRANSMISSION	1	1	1	1	1	1		
4	1	1A2000-21150	COVER L,PROTECTIVE	1	1	1	1	1	1		
5	1	1A2000-21160	COVER R,PROTECTIVE	1	1	1	1	1	1		
6	1	1A2000-21200	PACKING,TRANSM.CASE	1	1	1	1	1	1		
7	1	1A1220-28290	CAP, PTO	1	1	1	1	1	1		
8	1	23414-080000	GASKET, 8X1.0	2	2	2	2	2	2		
9	1	26106-060252	BOLT, M6X 25 PLATED	5	5	5	5	5	5		
10	1	26106-060302	BOLT, M6X 30 PLATED	4	4	4	4	4	4		
11	1	26107-080502	BOLT M 8X 50 PLATED	2	2	2	2	2	2		
11-1	1	26107-080502	BOLT M 8X 50 PLATED			1	1				K
(B=F000843) (D=F000436)											
12	1	26117-080122	BOLT M 8X 12 PLATED	2	2	2	2				
12-1	1	1A2001-21250	BOLT M8X12,COLLAR HD	2	2	2	2	2	2		S
(A=F000973) (B=F000973) (C=F000456) (D=F000456)											
13	1	26367-060002	NUT, M6	9	9	9	9	9	9		
14	1	26367-080002	NUT, M8	2	2	2	2				
14-1	1	26367-080002	NUT, M8			1	1	1	1	1	K
(A=F000843) (B=F000843) (C=F000436) (D=F000436)											

Fig.4. MAIN,COUNTER & REDUCT'N SHAFTS

4 . MAIN, COUNTER & REDUCT'N SHAFTS



N073653

(A)=YK682C
(B)=YK682G
(C)=YK782C

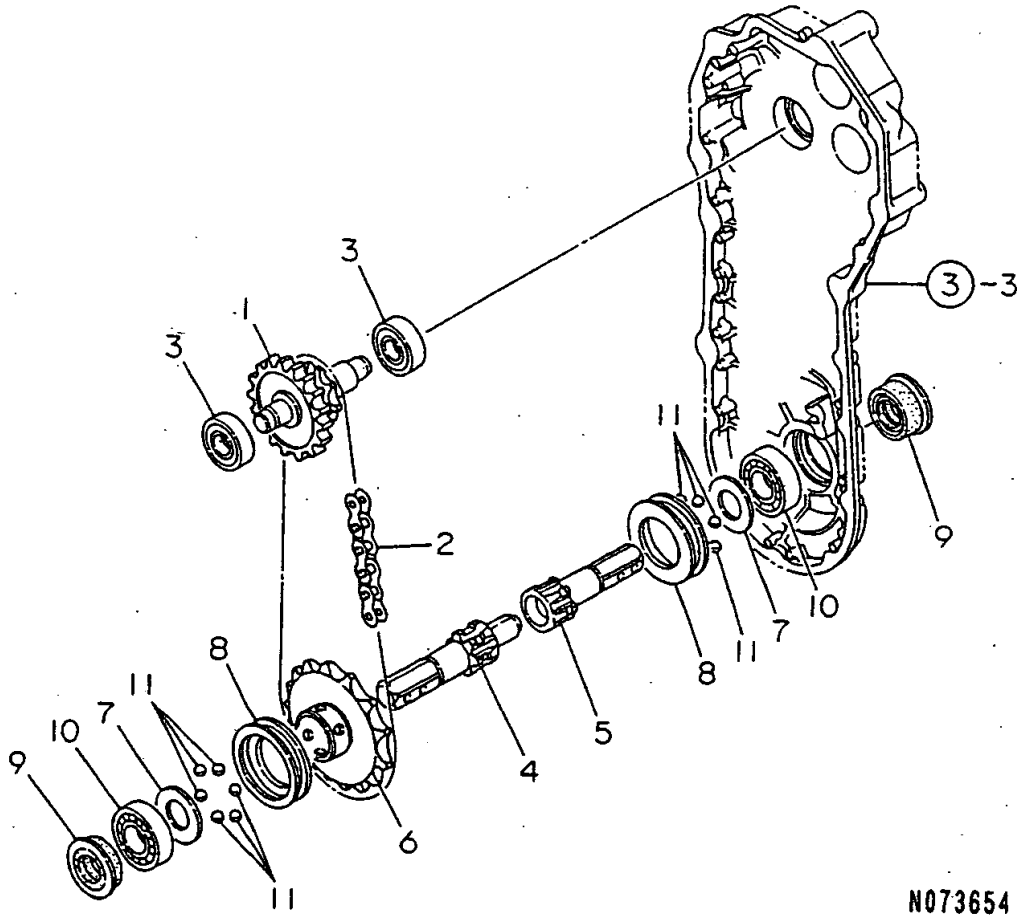
(D)=YK782G
(E)=YK682P,FL
(F)=YK782P,FL

No.	Lev.	Parts No.	Description	Q'ty						I	R
				(A)	(B)	(C)	(D)	(E)	(F)		
1	1	1A2009-23000	SHAFT COMPL.,MAIN	1	1	1	1	1	1		
2	1	1A2000-23012	GEAR 23 SLIDE	1	1	1	1	1	1		
3	1	1A2009-23030	GEAR 15X27 COMPL.	1	1	1	1	1	1		
4	2	1A2000-23020	BUSH 17X10, DRY	2	2	2	2	2	2		
5	1	1A2000-23070	COLLAR 18X22X11	1	1	1	1	1	1		
6	1	1E4060-74090	LINER 17X24X1	2	2	2	2	2	2		
7	1	22242-000170	RING, 17	2	2	2	2	2	2		
8	1	24101-062034	BEARING, BALL 6203	2	2	2	2	2	2		
9	1	24421-173208	SEAL, OIL TC173208	2	2	2	2	2	2		
10	1	1A2009-23100	SHAFT COMP.,COUNTER	1	1	1	1	1	1		
11	1	1A2009-23140	GEAR 15X23,SLIDE	1	1	1	1	1	1		
12	1	24101-062024	BEARING, BALL 6202	2	2	2	2	2	2		
13	1	1A2000-23200	SHAFT COMP.,REDUCTN	1	1	1	1	1	1		
14	1	1A2000-23251	BEARING 6302-9T3C	1	1	1	1	1	1		
15	1	24101-063024	BEARING, BALL 6302	1	1	1	1	1	1		
16	1	1A2019-23060	AXLE SHAFT (582							1	1
17	1	1A2000-23100	SHAFT COMPL.,COUNTER							1	1

Remarks
(1)EXCLUSIVE FOR YK682FL,782FL.

Fig.5. FINAL SHAFT & AXLE

5. FINAL SHAFT & AXLE



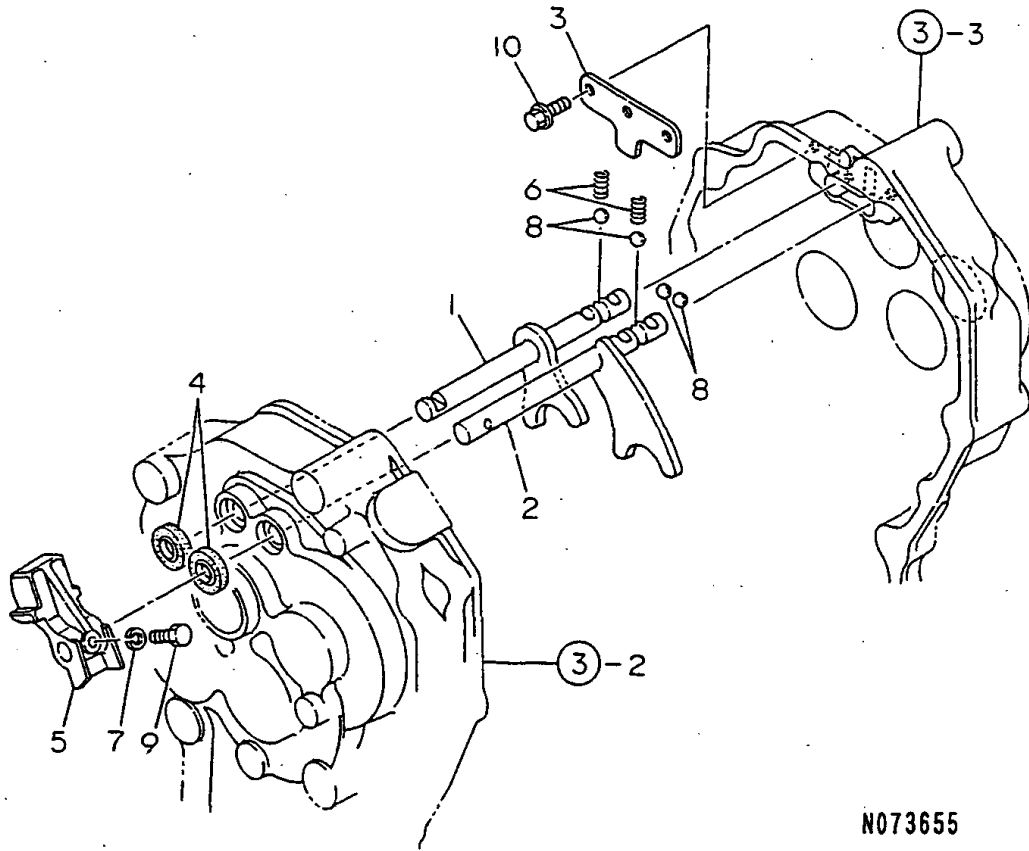
(A)=YK682C
(B)=YK682G
(C)=YK782C

(D)=YK782G
(E)=YK682P,FL
(F)=YK782P,FL

No.	Lev.	Parts No.	Description	Q'ty						I	R
				(A)	(B)	(C)	(D)	(E)	(F)		
1	1	1A2000-23301	SHAFT COMPL.,FINAL	1	1	1	1	1	1		
2	1	1A1479-23480	CHAIN 50X52,ROLLER	1	1	1	1	1	1		
3	1	24101-063034	BEARING, BALL 6303	2	2	2	2	2	2		
4	1	1A2009-24501	AXLE A	1	1	1	1	1	1		
5	1	1A2009-24511	AXLE B	1	1	1	1	1	1		
6	1	1A2000-24520	SPROCKET,AXLE	1	1	1	1	1	1		
7	1	1A2000-24530	LINER 27X45X2	2	2	2	2	2	2		
8	1	1A2000-24550	SHIFTER	2	2	2	2	2	2		
9	1	1A2000-24600	SEAL 254411,OIL	2	2	2	2	2	2		
10	1	24101-062054	BEARING, BALL 6205	2	2	2	2	2	2		
11	1	24190-120001	BALL, STEEL 3/8	12	12	12	12	12	12		

Fig.6. MAIN CHANGE

6. MAIN CHANGE



N073655

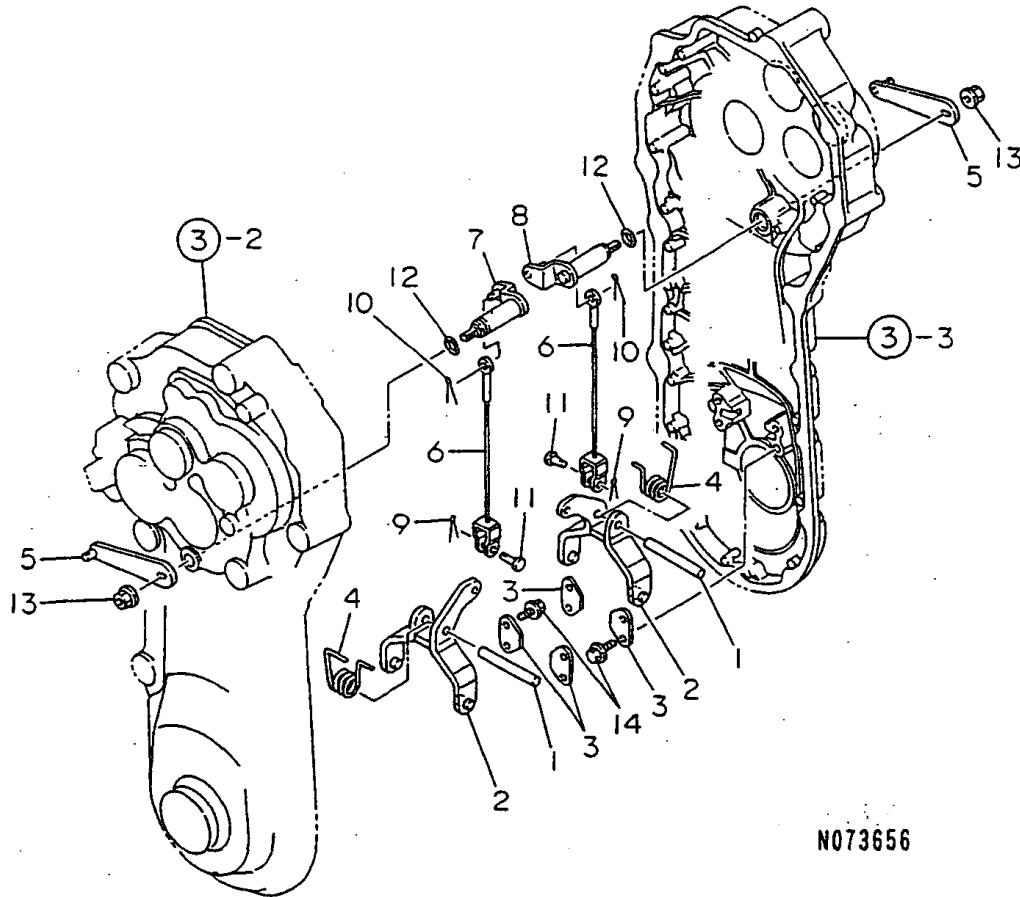
(A)=YK682C
(B)=YK682G
(C)=YK782C

(D)=YK782G
(E)=YK682P,FL
(F)=YK782P,FL

No.	Lev.	Parts No.	Description	Qty						I	R
				(A)	(B)	(C)	(D)	(E)	(F)		
1	1	1A2000-27010	SHAFT A COMP.,FORK	1	1	1	1	1	1		
2	1	1A2000-27051	SHAFT B COMP.,FORK	1	1	1	1	1	1		
3	1	1A2000-27100	PLATE,BALL KEEP	1	1	1	1	1	1		
4	1	1A1104-28230	OIL SEAL 12184	2	2	2	2	2	2		
5	1	1A2000-55241	BRACKET,CHANGE LEVER	1	1	1	1	1	1		
6	1	1E6150-56040	SPRING, FORK	2	2	2	2	2	2		
7	1	22217-060000	WASHER, SPRING 6	1	1	1	1	1	1		
8	1	24190-100001	BALL, STEEL 5/16	4	4	4	4	4	4		
9	1	26116-060162	BOLT, M6X 16 PLATED	1	1	1	1	1	1		
10	1	26476-060142	SCREW, TAPPING M6X14	3	3	3	3	3	3		

Fig.7. SIDE CLUTCH

7. SIDE CLUTCH



N073656

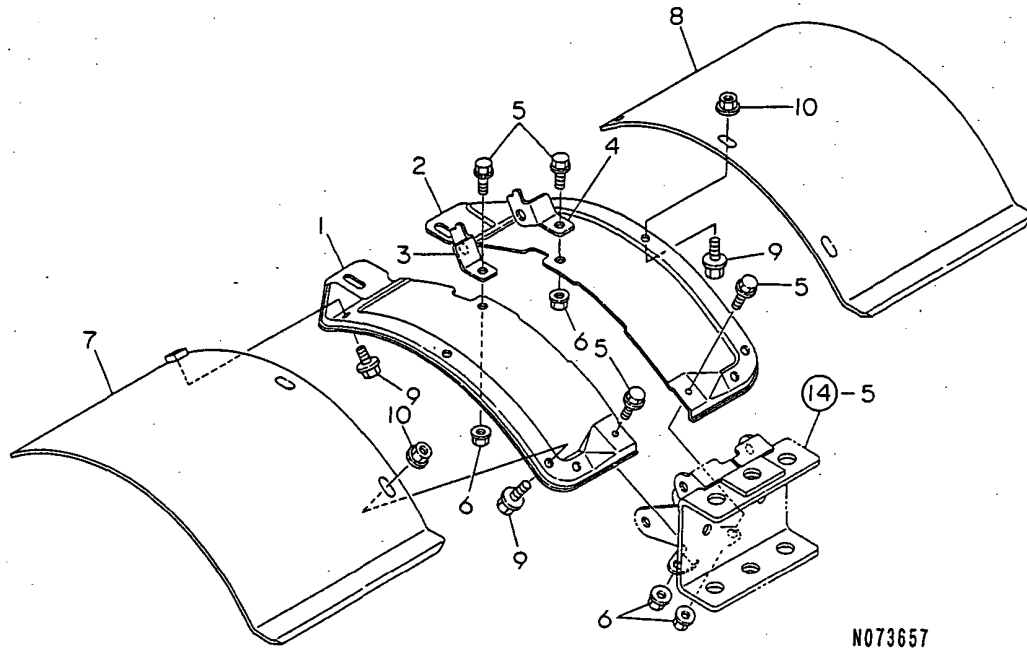
(A)=YK682C
(B)=YK682G
(C)=YK782C

(D)=YK782G
(E)=YK682P,FL
(F)=YK782P,FL

No.	Lev.	Parts No.	Description	Q'ty						I	R
				(A)	(B)	(C)	(D)	(E)	(F)		
1	1	1A1470-20700	PIN 8X55	2	2	2	2	2	2		
2	1	1A2000-27530	FORK COMP.,SD.CLUTCH	2	2	2	2	2	2		
3	1	1A2000-27600	PLATE,SD.CLUTCH KEEP	4	4	4	4	4	4		
4	1	1A2000-27650	SPRING,SD.CLTCH TORS	2	2	2	2	2	2		
5	1	1A2000-27700	ARM COMP.,SD.CLUTCH	2	2	2	2	2	2		
6	1	1A2000-27750	CABLE 163	2	2	2	2	2	2		
7	1	1A2000-27800	SHAFT L CMP,SD.CLTCH	1	1	1	1	1	1		
8	1	1A2000-27840	SHAFT R CMP,SD.CLTCH	1	1	1	1	1	1		
9	1	22417-160120	PIN, COTTER 1.6X12	2	2	2	2	2	2		
10	1	22417-200120	COTTER PIN 2.0X12	2	2	2	2	2	2		
11	1	22487-060120	PIN, H 6X 12	2	2	2	2	2	2		
12	1	24311-000100	O-RING, 1AP10.0	2	2	2	2	2	2		
13	1	26367-080002	NUT, M8	2	2	2	2	2	2		
14	1	26476-060142	SCREW, TAPPING M6X14	8	8	8	8	8	8		

Fig.8. FENDER

8. FENDER



N073657

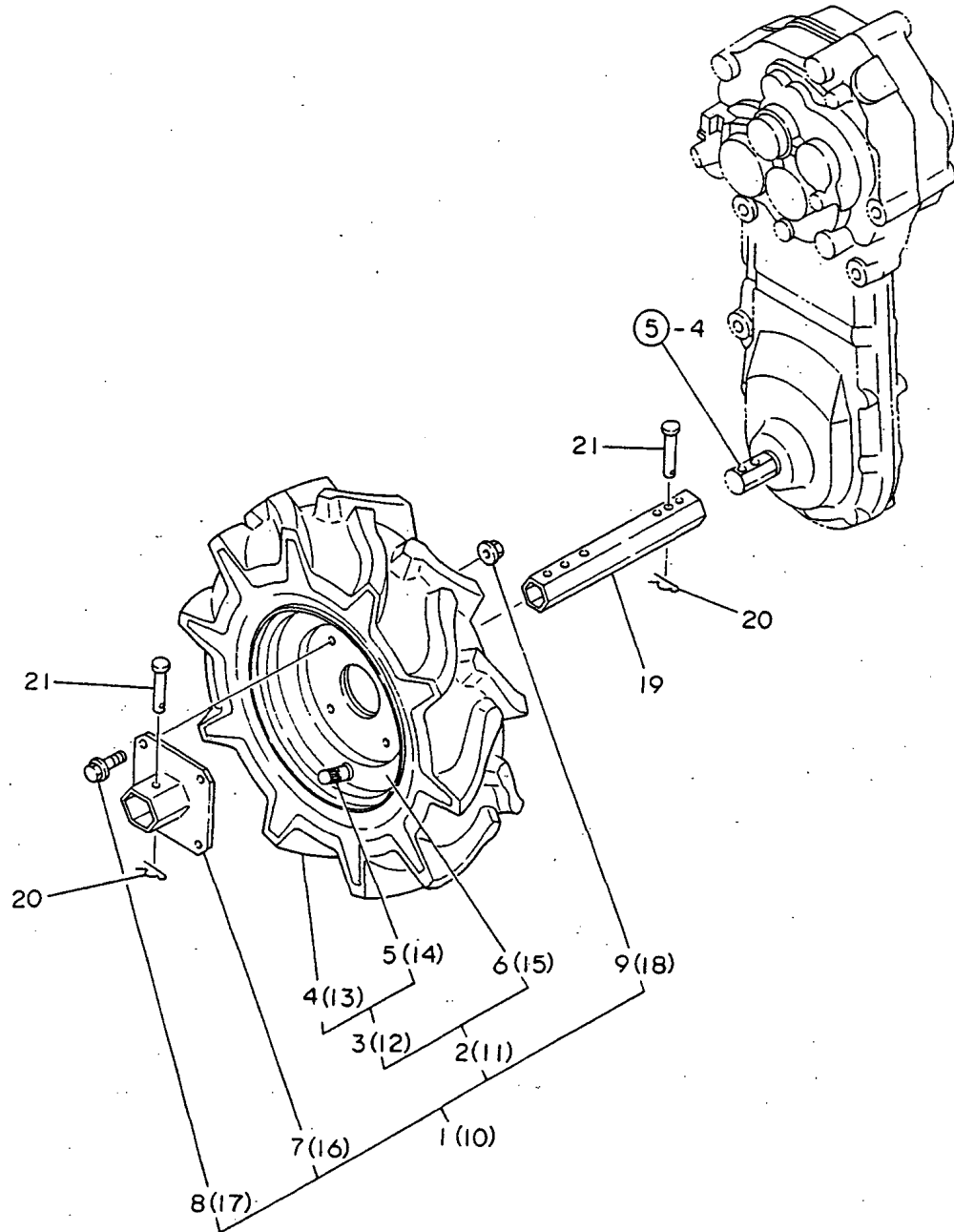
(A)=YK682C
(B)=YK682G
(C)=YK782C

(D)=YK782G
(E)=YK682P,FL
(F)=YK782P,FL

No.	Lev.	Parts No.	Description	Q'ty						I	R
				(A)	(B)	(C)	(D)	(E)	(F)		
1	1	1A2019-32000	FENDER L 1.0	1	1	1	1	1	1		
2	1	1A2019-32010	FENDER R 1.0	1	1	1	1	1	1		
3	1	1A2019-32100	STAY L,FENDER MTG.	1	1	1	1	1	1		
4	1	1A2019-32110	STAY R,FENDER MTG.	1	1	1	1	1	1		
5	1	26107-080122	BOLT M 8X 12 PLATED	4	4	4	4	4	4		
6	1	26367-080002	NUT, M8	4	4	4	4	4	4		
7	1	1A2138-32090	FENDER,EXTENSION	1	1	1	1	1	1	1	W
		(A=FXXXXXX)	(B=F001298)	(C=FXXXXXX)	(D=FXXXXXX)	(E=F001373)	(F=F000701)				
8	1	1A2138-32150	FENDER,EXTENSION	1	1	1	1	1	1	1	W
		(A=FXXXXXX)	(B=F001298)	(C=FXXXXXX)	(D=FXXXXXX)	(E=F001373)	(F=F000701)				
9	1	26106-080122	BOLT, M8X 12 PLATED	6	6	6	6	6	6	6	W
		(A=FXXXXXX)	(B=F001298)	(C=FXXXXXX)	(D=FXXXXXX)	(E=F001373)	(F=F000701)				
10	1	26367-080002	NUT, M8	5	5	5	5	5	5	5	W
		(A=FXXXXXX)	(B=F001298)	(C=FXXXXXX)	(D=FXXXXXX)	(E=F001373)	(F=F000701)				

Fig.9. TIRE(ADDITIONAL ITEM)

9. TIRE(ADDITIONAL ITEM)



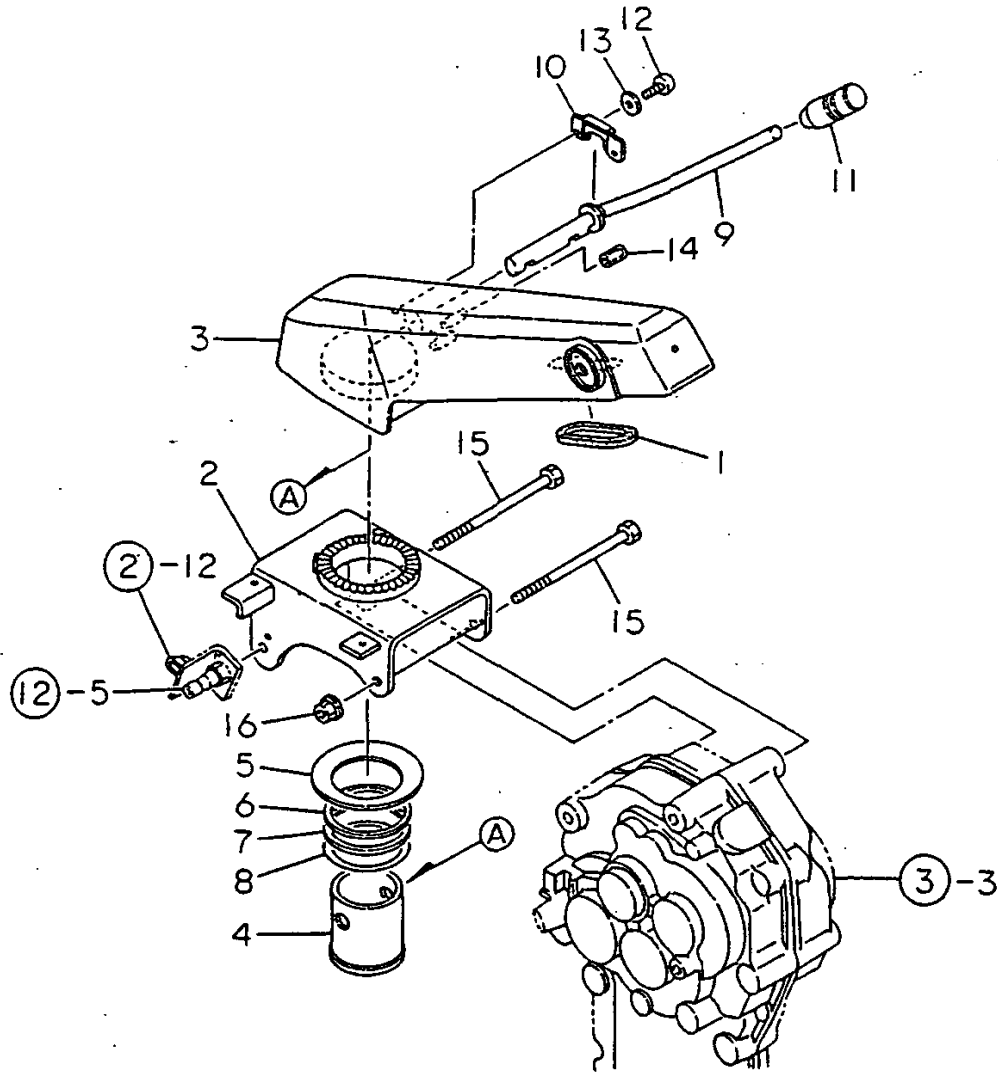
(A)=YK682C
(B)=YK682G
(C)=YK782C

(D)=YK782G
(E)=YK682P,FL
(F)=YK782P,FL

No.	Lev.	Parts No.	Description	Q'ty						I	R
				(A)	(B)	(C)	(D)	(E)	(F)		
1	1	1A2019-31010	TIRE 4.00-8L W/FLNG.		1		1				
2	2	1A2040-31030	TIRE L W/WHEEL		1		1				
3	3	1A2040-31050	TIRE 4.00-8 W/O WHL.		1		1				
4	4	1A2040-31070	TIRE 4.00-8		1		1				
5	4	1A2040-31090	VALVE TR412		1		1				
6	3	1A2040-31100	WHEEL 4.00-8		1		1				
7	2	1A2015-31210	FLANGE COMP.,WHEEL		1		1				
8	2	26107-080182	BOLT M 8X 18 PLATED		4		4				
9	2	26367-080002	NUT, M8		4		4				
10	1	1A2019-31020	TIRE 4.00-8R W/FLNG.		1		1				
11	2	1A2040-31040	TIRE R W/WHEEL		1		1				
12	3	1A2040-31050	TIRE 4.00-8 W/O WHL.		1		1				
13	4	1A2040-31070	TIRE 4.00-8		1		1				
14	4	1A2040-31090	VALVE TR412		1		1				
15	3	1A2040-31100	WHEEL 4.00-8		1		1				
16	2	1A2015-31210	FLANGE COMP.,WHEEL		1		1				
17	2	26107-080182	BOLT M 8X 18 PLATED		4		4				
18	2	26367-080002	NUT, M8		4		4				
19	1	1A2019-31100	PIPE E250,AXLE		2		2				
20	1	1A1540-46020	PIN 8,SNAP		4		4				
21	1	22486-080450	PIN, H 8X 45		4		4				

Fig.10. HANDLE COLUMN(MOVE-ROUND)

10. HANDLE COLUMN(MOVE-ROUND)



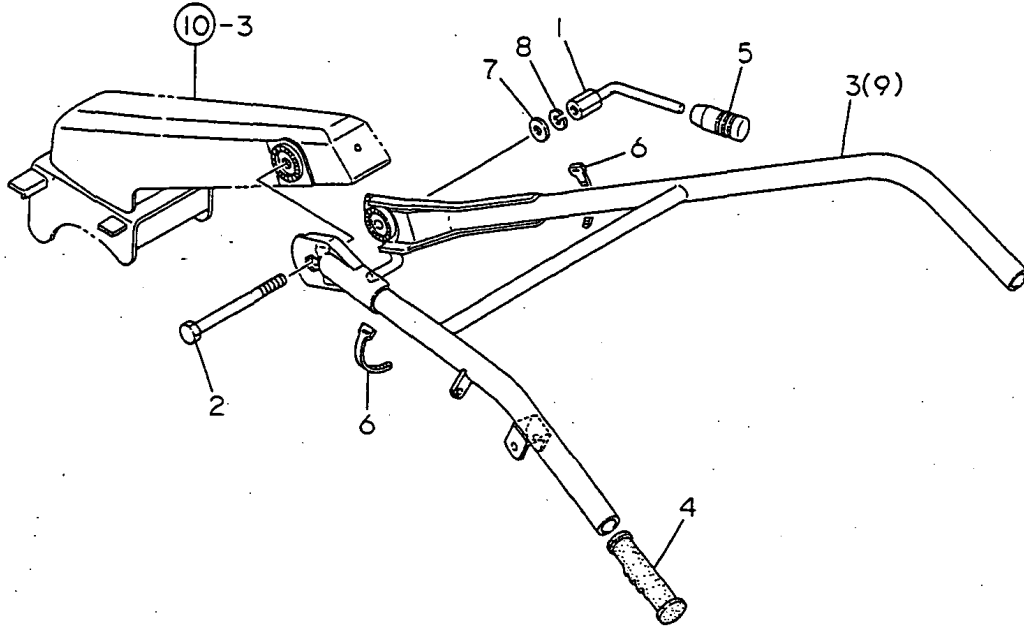
(A)=YK682C
(B)=YK682G
(C)=YK782C

(D)=YK782G
(E)=YK682P,FL
(F)=YK782P,FL

No.	Lev.	Parts No.	Description	Q'ty						I	R
				(A)	(B)	(C)	(D)	(E)	(F)		
1	1	1A1470-40301	BAND,WIRE PROTECTIVE	1	1	1	1	1	1		
2	1	1A2000-51000	COLUMN COMP.,HANDLE	1	1	1	1	1	1		
3	1	1A2000-51100	FRAME COMP.,HANDLE	1	1	1	1				
3-1	1	1A2000-51101	FRAME COMP.,HANDLE	1	1	1	1	1	1		R
		(A=FXXX)	(B=FXXX)	(C=FXXX)	(D=FXXX)						
4	1	1A2000-51250	BAR,MOVE-RD.CORE	1	1	1	1	1	1		
5	1	1A2000-51280	SPRING,BELLEVILLE	1	1	1	1	1	1		
6	1	1A2000-51310	SHIM 57X65X1	1	1	1	1	1	1		
7	1	1A2000-51320	SHIM 57X65X0.8	1	1	1	1	1	1		
8	1	1A2000-51330	SHIM 57X65X0.6	1	1	1	1	1	1		
9	1	1A2000-51350	LEVER COMP.,MV-RD.	1	1	1	1	1	1		
10	1	1A2000-51450	PLATE,MV-RD.LVR.CHK.	1	1	1	1	1	1		
11	1	1E6570-65750	GRIP,CONT.LEVER BLK.	1	1	1	1	1	1		
12	1	1A1750-90050	SCREW 5X10,TAPPING	2	2	2	2	2	2		
13	1	1A1750-90150	WASHER 5,PLAIN	2	2	2	2	2	2		
14	1	23061-070015	PIPE, 7X 15	1	1	1	1	1	1		
15	1	26156-101202	BOLT, M10X120 PLATED	2	2	2	2	2	2		
16	1	26377-100002	NUT, M10	1	1	1	1	1	1		

Fig.11. HANDLE

11. HANDLE



(A)=YK682C
(B)=YK682G
(C)=YK782C

(D)=YK782G
(E)=YK682P,FL
(F)=YK782P,FL

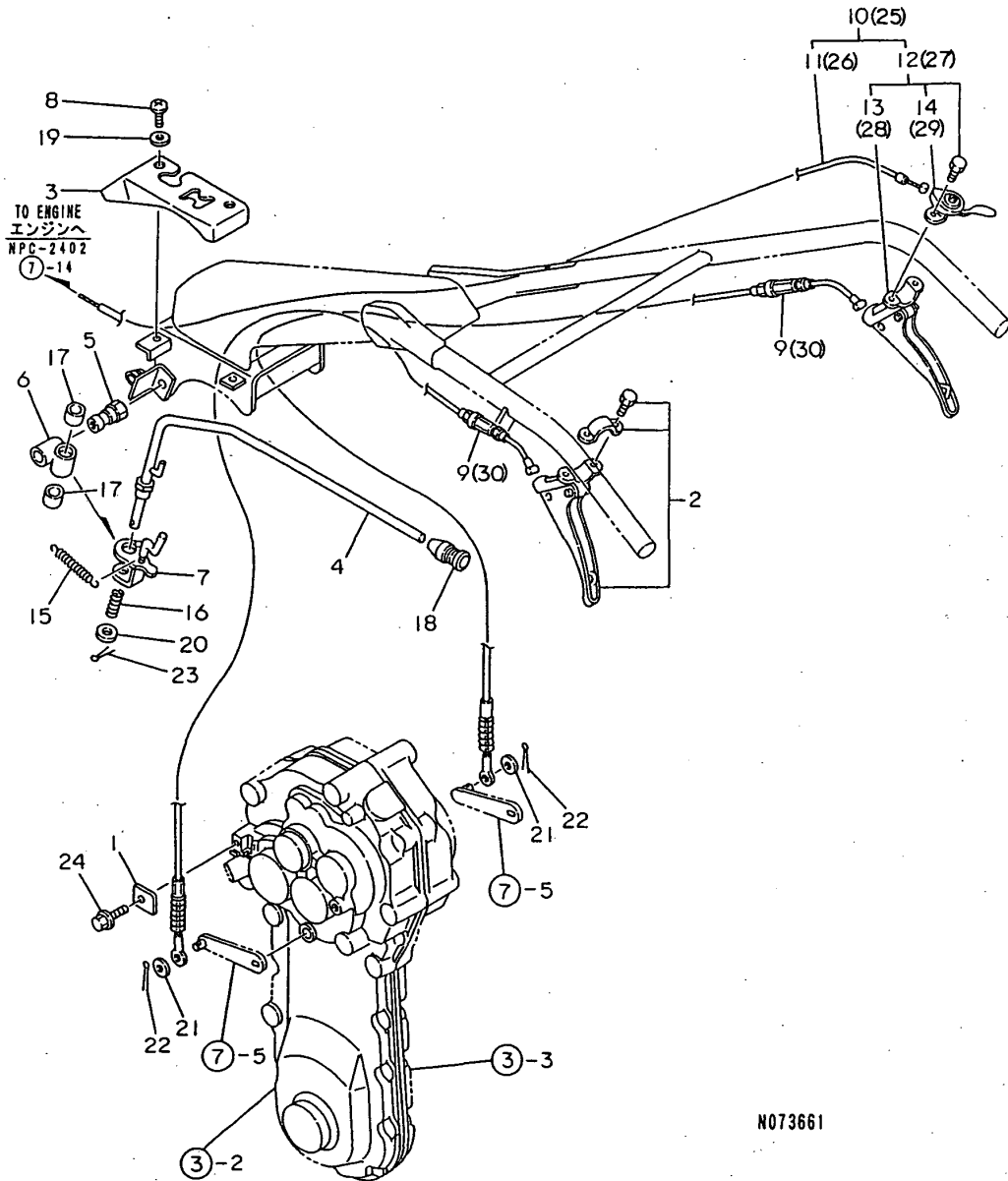
No.	Lev.	Parts No.	Description	Q'ty						I	R
				(A)	(B)	(C)	(D)	(E)	(F)		
1	1	1A2000-51400	LEVER CMP.,HANDLE LC	1	1	1	1	1	1		
2	1	1A2000-51430	BOLT 12X125	1	1	1	1	1	1		
3	1	1A2009-51600	HANDLE COMPL.	1	1	1	1	1	1		
4	1	192040-56220	GRIP,HANDLE	2	2	2	2	2	2		
5	1	1E6570-65750	GRIP,CONT.LEVER BLK.	1	1	1	1	1	1		
6	1	1E6102-84970	BAND 140,WIRE LOCK	2	2	2	2	2	2		
7	1	22137-120000	WASHER, 12	1	1	1	1	1	1		
8	1	22217-120000	WASHER, SPRING 12	1	1	1	1	1	1		
9	1	1A2019-51700	HANDLE(582 CMP							1	1

Remarks

(1)EXCLUSIVE FOR YK682FL,782FL.

Fig.12. CONTROL LEVER 1

12. CONTROL LEVER 1



N073661

(A)=YK682C
(B)=YK682G
(C)=YK782C

(D)=YK782G
(E)=YK682P,FL
(F)=YK782P,FL

No.	Lev.	Parts No.	Description	Q'ty						I	R
				(A)	(B)	(C)	(D)	(E)	(F)		
1	1	1A1470-10350	CLAMP,SD.CLUTCH WIRE	2	2	2	2	2	2		
2	1	7C6220-52840	LEVER ASSY, CLUTCH L	1	1	1	1	1	1		
3	1	1A2000-55061	COVER,CHANGE	1	1	1	1	1	1		
4	1	1A2000-55090	LEVER COMP.,CHANGE	1	1	1	1	1	1		
5	1	1A2000-55150	PIN,CHG.LVR.FULCRUM	1	1	1	1	1	1		
6	1	1A2000-55160	FULCRUM CMP,CHG.LVR.	1	1	1	1	1	1		
7	1	1A2000-55202	PLATE COMP.,CHANGE	1	1	1	1	1	1		
8	1	1A1735-55350	SCREW 6X12,PAN HD.	2	2	2	2	2	2		
9	1	1A2000-55800	WIRE,SIDE CLUTCH	2	2	2	2	2	2		
10	1	1A2009-55800	LEVER R SET,SD.CLTCH	1	1	1	1	1	1		
11	2	1A2000-55620	WIRE,ACCELERATOR	1	1	1	1	1	1		
12	2	1A1479-55780	LEVER R,SIDE CLUTCH	1	1	1	1	1	1		
13	3	7C6220-52910	LEVER ASSY, CLUTCH R	1	1	1	1	1	1		
14	3	1A1479-55790	ACCELERAT.LEVER	1	1	1	1	1	1		
15	1	1A2000-55830	SPRING,CHANGE LEVER	1	1	1	1	1	1		
16	1	1A1104-56030	SPRING,CHANGE LEVER	1	1	1	1	1	1		
17	1	1A1105-57151	METAL,CHANGE LEVER	2	2	2	2	2	2		
18	1	1E6570-65750	GRIP,CONT.LEVER BLK.	1	1	1	1	1	1		
19	1	1A1750-90160	WASHER 6, PLAIN	2	2	2	2	2	2		
20	1	22117-120000	WASHER, 12	1	1	1	1	1	1		
21	1	22137-060000	WASHER, 6	2	2	2	2	2	2		
22	1	22417-200100	COTTER PIN 2.0X10	2	2	2	2	2	2		
23	1	22417-200180	COTTER PIN 2.0X18	1	1	1	1	1	1		
24	1	26476-060142	SCREW, TAPPING M6X14	2	2	2	2	2	2		
25	1	1A2019-55800	LEVER R SET,SD.CLTCH							1	1
26	2	1A2019-55820	WIRE, ACCELERATOR							1	1
27	2	1A1479-55780	LEVER R,SIDE CLUTCH							1	1
28	3	7C6220-52910	LEVER ASSY, CLUTCH R							1	1
29	3	1A1479-55790	ACCELERAT.LEVER							1	1
30	1	1A2019-55850	WIRE,SIDE CLUTCH							2	2

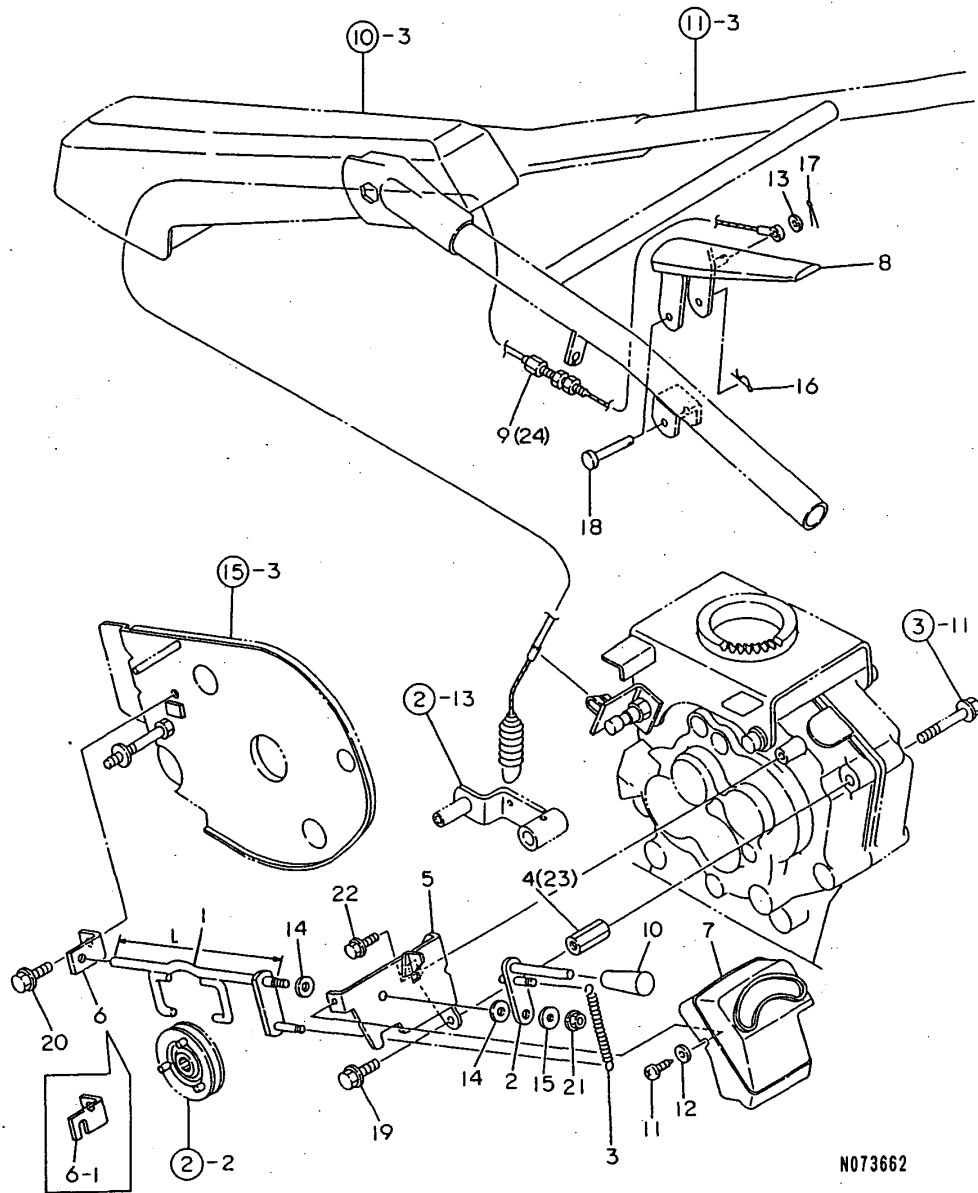
Remarks

(1)EXCLUSIVE FOR YK682FL,782FL.

N:Old $\begin{matrix} \leftarrow \text{Yes} \\ \text{No} \end{matrix}$ New, Q:Old $\begin{matrix} \leftarrow \text{No} \\ \text{Yes} \end{matrix}$ New, R:Old $\begin{matrix} \leftarrow \text{Yes} \\ \text{No} \end{matrix}$ New, S:Old $\begin{matrix} \leftarrow \text{No} \\ \text{Yes} \end{matrix}$ New, W:Add, Z:Discontinued, F:Interchangeable by set, K:Q'ty Change

Fig.13. CONTROL LEVER 2

13. CONTROL LEVER 2

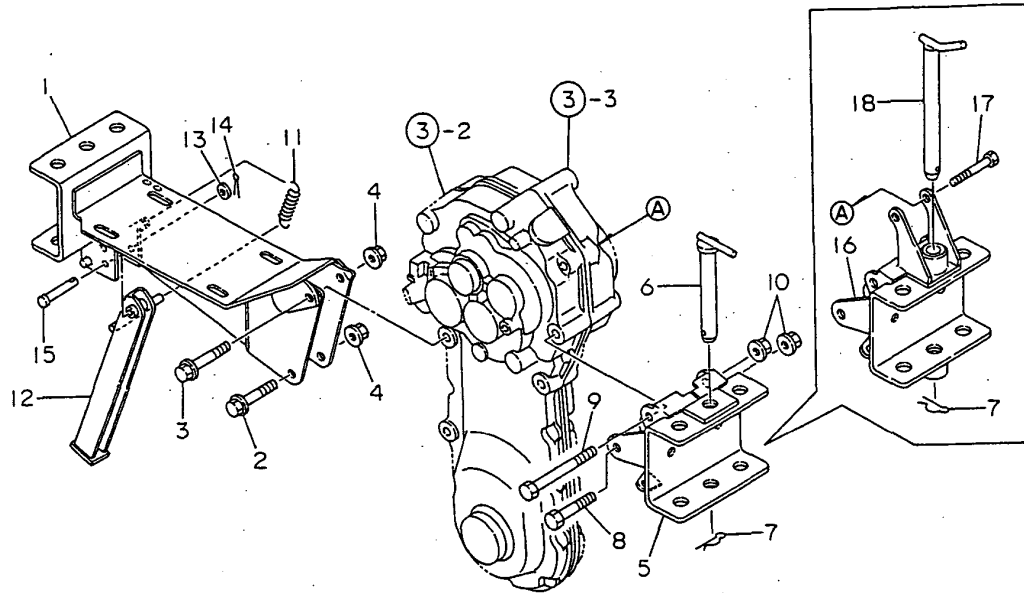


No.	Lev.	Parts No.	Description	Q'ty						I	R
				(A)	(B)	(C)	(D)	(E)	(F)		
1	1	1A2009-55101	GRIP,CONT.LEVER BLK.	1	1	1	1				1
1-1	1	1A2016-55151	SHIFT LEVER ASSY	1	1	1	1	1	1	1	S 1
		(A=F000237) (B=F000237) (C=F000201) (D=F000201)									
2	1	1A2009-55200	ARM COMP.,SWITCHING	1	1	1	1	1	1	1	
3	1	1A2009-55240	SPRING 8X60,TENSION	1	1	1	1	1	1	1	
4	1	1A2009-55250	NUT M8X34,LONG	1	1	1	1	1	1	1	Z
		(B=F000843) (D=F000436)									
5	1	1A2009-55280	FULCRUM A COMPL.	1	1	1	1	1	1	1	
6	1	1A2009-55310	FULCRUM B	1	1	1	1				
6-1	1	1A2016-55380	FULCRUM B	1	1	1	1	1	1	1	S
		(A=F000237) (B=F000237) (C=F000201) (D=F000201)									
7	1	1A2009-55350	COVER,SUB-CHANGE	1	1	1	1	1	1	1	
8	1	1A2009-55400	LEVER COMP.,DEADMAN	1	1	1	1	1	1	1	
9	1	1A2009-55750	WIRE CMP,MAIN CLUTCH	1	1	1	1	1	1	1	
10	1	1E7250-63300	GRIP	1	1	1	1	1	1	1	
11	1	1A1750-90050	SCREW 5X10,TAPPING	1	1	1	1	1	1	1	
12	1	1A1750-90150	WASHER 5,PLAIN	1	1	1	1	1	1	1	
13	1	22137-060000	WASHER, 6	1	1	1	1	1	1	1	
14	1	22137-080000	WASHER, 8	2	2	2	2	2	2	2	
15	1	22157-060000	WASHER, 6	1	1	1	1	1	1	1	
16	1	22360-060000	PIN, SNAP 6	1	1	1	1	1	1	1	
17	1	22417-200100	COTTER PIN 2.0X10	1	1	1	1	1	1	1	
18	1	22486-080400	PIN, H 8X 40	1	1	1	1	1	1	1	
19	1	26107-080162	BOLT M 8X 16 PLATED	1	1	1	1	1	1	1	
20	1	26107-080162	BOLT M 8X 16 PLATED	1	1	1	1	1	1	1	
21	1	26367-060002	NUT, M6	1	1	1	1	1	1	1	
22	1	26476-060142	SCREW, TAPPING M6X14	1	1	1	1	1	1	1	
23	1	1A2019-55250	STUD M8X30.8		1		1				W
		(B=F000843) (D=F000436)									
24	1	1A2019-55750	WIRE COMP.,MN.CLUTCH							1	1 2

Remarks
 (1)L= REFER.NO.1 204M/M,1-1 236M/M.
 (2)EXCLUSIVE FOR YK682FL,782FL.

Fig.14. ENGINE FRAME & HITCH

14. ENGINE FRAME & HITCH

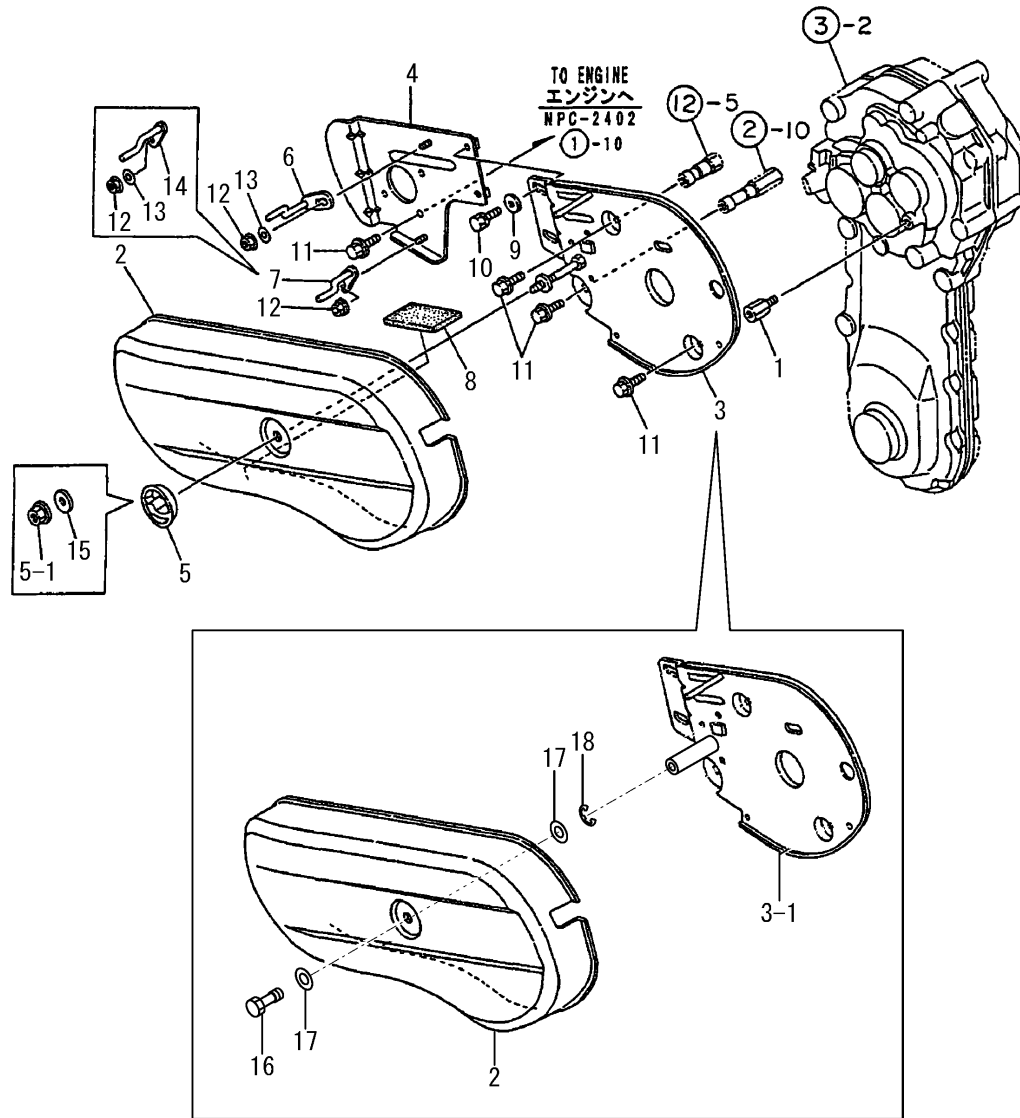


(A)=YK682C
(B)=YK682G
(C)=YK782C

(D)=YK782G
(E)=YK682P,FL
(F)=YK782P,FL

No.	Lev.	Parts No.	Description	Q'ty						I	R
				(A)	(B)	(C)	(D)	(E)	(F)		
1	1	1A2009-61000	FRAME COMP.,ENGINE	1	1	1	1	1	1		
2	1	26137-100502	BOLT, M10X 50 PLATED	1	1	1	1	1	1		
3	1	26137-100602	BOLT, M10X 60 PLATED	1	1	1	1	1	1		
4	1	26377-100002	NUT, M10	2	2	2	2	2	2		
5	1	1A2009-61200 (B=F000843)	HITCH 95-C COMPL. (D=F000436)	1	1	1	1	1	1		Z
6	1	1A1040-81100 (B=F000843)	PIN, HITCH (D=F000436)	1	1	1	1	1	1		Z
6-1	1	1S0203-46000	PIN, HITCH	1		1		1	1		N
7	1	22360-160000 (A=FXXXXXX)	PIN, SNAP 16 (C=FXXXXXX)	1	1	1	1	1	1		
8	1	26156-100552	BOLT, M10X 55 PLATED	1	1	1	1	1	1		
9	1	26156-100952	BOLT, M10X 95 PLATED	1	1	1	1	1	1		
10	1	26367-100002	NUT, M10	2	2	2	2	2	2		
11	1	1A1105-16001	SPRING,MN.CLTCH LVR.	1	1	1	1	1	1		
12	1	1A2000-61300	STAND COMPL.	1	1	1	1	1	1		
13	1	22137-080000	WASHER, 8	1	1	1	1	1	1		
14	1	22417-200180	COTTER PIN 2.0X18	1	1	1	1	1	1		
15	1	22486-080400	PIN, H 8X 40	1	1	1	1	1	1		
16	1	1A2019-61200 (B=F000843)	HITCH 95-G COMPL. (D=F000436)		1		1				W
17	1	26116-080552 (B=F000843)	BOLT, M8X 55 PLATED (D=F000436)		1		1				W
18	1	1A2019-61350 (B=F000843)	PIN 160 COMP.,HITCH (D=F000436)		1		1				W

Fig.15. BELT COVER



(A)=YK682C
(B)=YK682G
(C)=YK782C

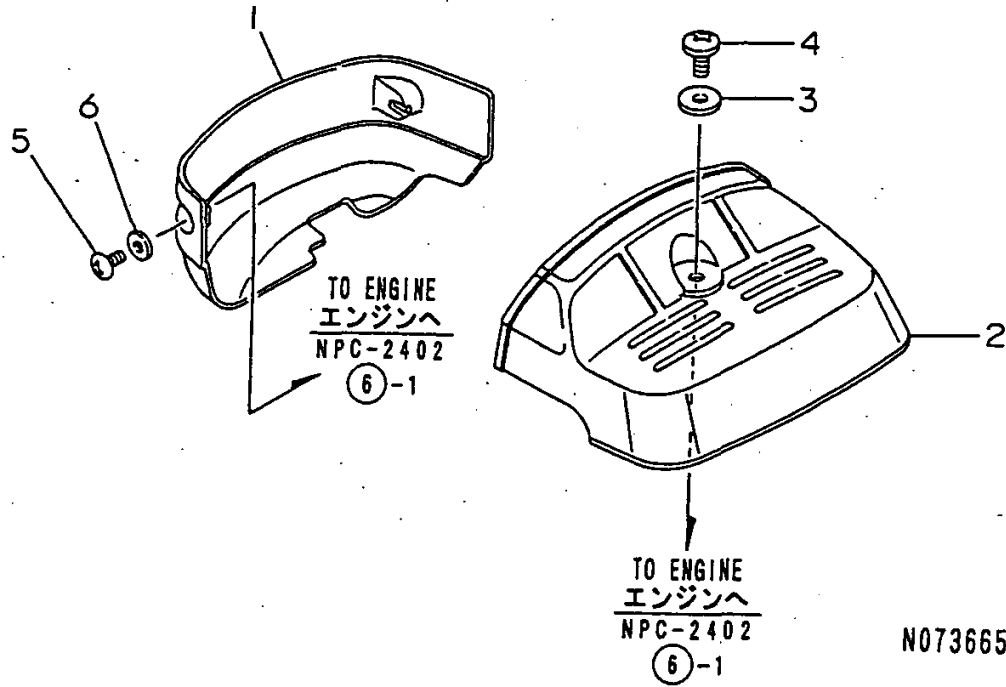
(D)=YK782G
(E)=YK682P,FL
(F)=YK782P,FL

No.	Lev.	Parts No.	Description	Qty						I	R
				(A)	(B)	(C)	(D)	(E)	(F)		
1	1	1A1490-10340	STUD 22.5,BACK COVER	1	1	1	1	1	1		
2	1	1A2009-62060	COVER EW,BELT	1	1	1	1				
2-1	1	1A2009-62061	COVER EW,BELT	1	1	1	1	1	1	1	R
3	1	1A2009-62100	COVER EW COMP.,REAR	1	1	1	1	1	1	1	
3-1	1	1A2009-62200	BACK COVER CMP	1	1	1	1	1	1	1	F
4	1	1A2000-62200	GUARD COMP.,PULLEY	1	1	1	1				
4-1	1	1A2000-62201	GUARD COMP.,PULLEY	1	1	1	1	1	1	1	N
5	1	1A2000-62300	KNOB,BELT COVER	1	1	1	1	1	1	1	
5-1	1	26367-080002	NUT, M8	1	1	1	1	1	1	1	S
5-2	1	26367-080002	NUT, M8	1	1	1	1	1	1	1	Z
6	1	1A2009-62400	RETAINER EW CMP,BELT	1	1	1	1				
6-1	1	1A2009-62401	RETAINER EW CMP,BELT	1	1	1	1	1	1	1	R
7	1	1A2009-62420	RETAINER B CMP,BELT	1	1	1	1				
7-1	1	1A2009-62421	RETAINER B CMP.,BELT	1	1	1	1				R
7-2	1	1A2009-62421	RETAINER B CMP.,BELT	1	1	1	1				Z
8	1	1A2009-62480	SEAT 100X60X5	1	1	1	1	1	1	1	
9	1	22137-080000	WASHER, 8	2	2	2	2	2	2	2	
10	1	26013-080144	BOLT, M8X 14	2	2	2	2	2	2	2	
11	1	26107-080122	BOLT M 8X 12 PLATED	6	6	6	6	6	6	6	
12	1	26367-060002	NUT, M6	2	2	2	2	2	2	2	
13	1	22137-060000	WASHER, 6	2	2	2	2	2	2	2	W
14	1	1A2001-62400	RETAINER CMP,BELT LW	1	1	1	1				W
14-1	1	1A2001-62401	RETAINER CMP,BELT LW	1	1	1	1	1	1	1	N
15	1	22157-080000	WASHER, 8	1	1	1	1	1	1	1	W
15-1	1	22157-080000	WASHER, 8	1	1	1	1	1	1	1	Z
16	1	1A2132-62050	BOLT	1	1	1	1	1	1	1	W
17	1	22137-080000	WASHER, 8	2	2	2	2	2	2	2	W
18	1	22272-000060	RING, E- 6	1	1	1	1	1	1	1	W

Remarks
(1)INTERCHANGEABLE BY SIMULTANEOUS REPLACEMENT WITH REF.16,17 & 18.

Fig.16. BONNET

16. BONNET



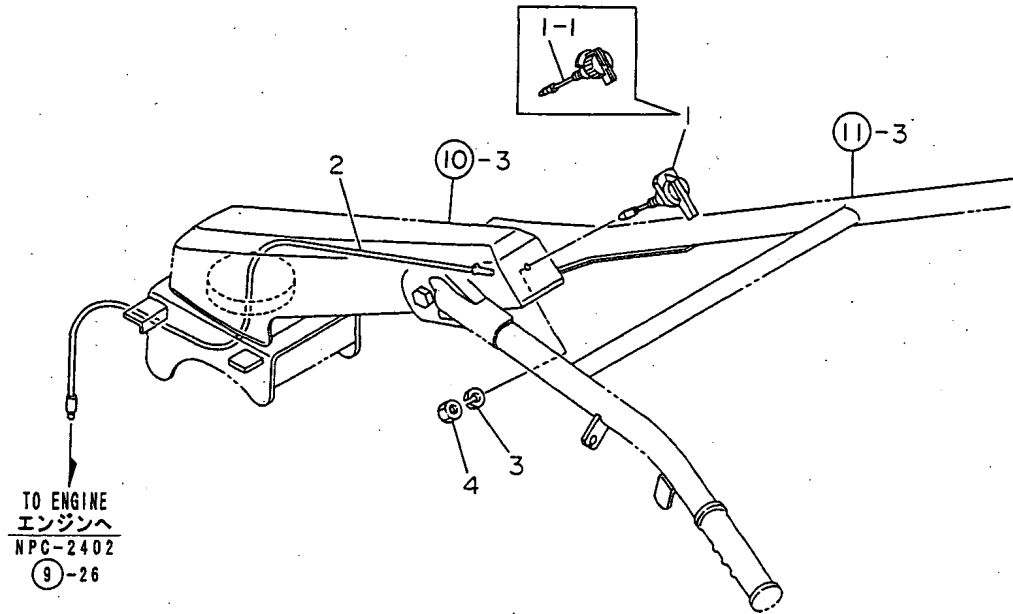
(A)=YK682C
(B)=YK682G
(C)=YK782C

(D)=YK782G
(E)=YK682P,FL
(F)=YK782P,FL

No.	Lev.	Parts No.	Description	Q'ty						I	R
				(A)	(B)	(C)	(D)	(E)	(F)		
1	1	1A2000-64100	MASK, FRONT	1	1	1	1	1	1		
2	1	1A2019-64200	COVER 55,REAR	1	1	1	1	1	1		
3	1	1A2000-64210	WASHER 6X19X1.0	1	1	1	1	1	1		
4	1	1A2000-64220	SCREW 6X16	1	1	1	1	1	1		
5	1	1A1750-90050	SCREW 5X10,TAPPING	2	2	2	2	2	2		
6	1	1A1750-90150	WASHER 5,PLAIN	2	2	2	2	2	2		

Fig.17. ELECTRICAL PARTS

17. ELECTRICAL PARTS



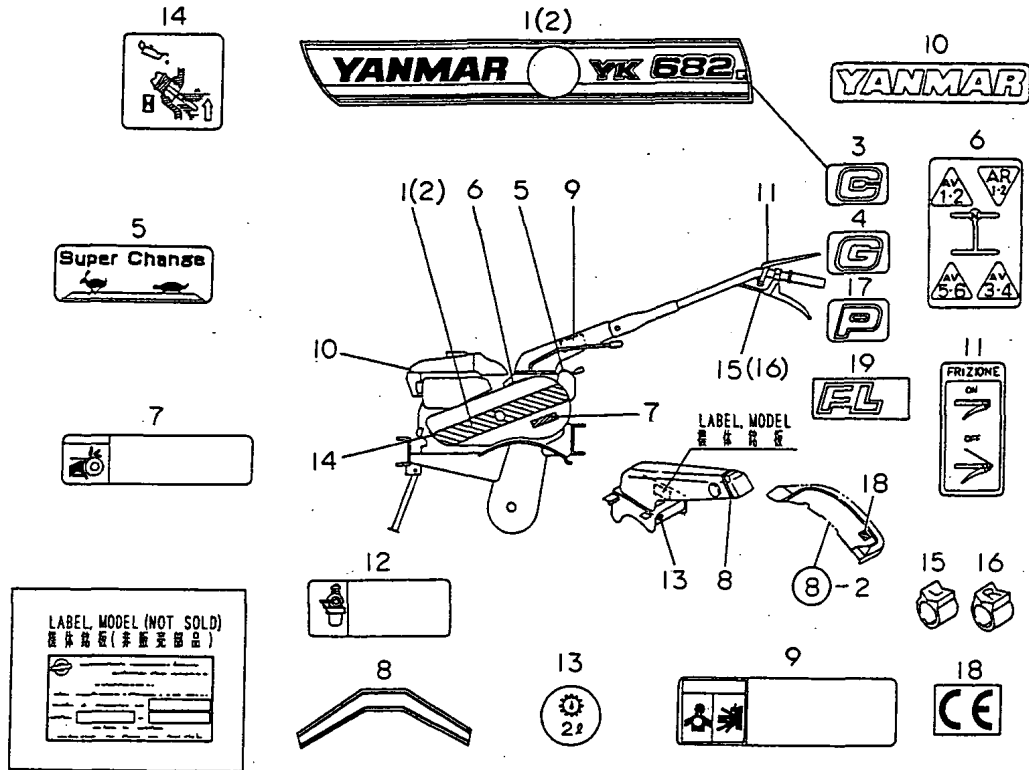
(A)=YK682C
(B)=YK682G
(C)=YK782C

(D)=YK782G
(E)=YK682P,FL
(F)=YK782P,FL

No.	Lev.	Parts No.	Description	Qty						I	R
				(A)	(B)	(C)	(D)	(E)	(F)		
1	1	1A1470-40900	SWITCH,STOP	1	1	1	1				
1-1	1	1A1750-40800	SWITCH,STOP	1	1	1	1	1	1	1	S
		(A=F000237)	(B=F000237)	(C=F000201)	(D=F000201)						
2	1	1A2000-83100	CORD,STOP SWITCH	1	1	1	1	1	1	1	
3	1	22217-080000	WASHER, SPRING 8	1	1	1	1	1	1	1	
4	1	26757-080002	NUT, LOCK M8	1	1	1	1	1	1	1	

Fig.18. LABELS

18. LABELS



N073667

(A)=YK682C
(B)=YK682G
(C)=YK782C

(D)=YK782G
(E)=YK682P,FL
(F)=YK782P,FL

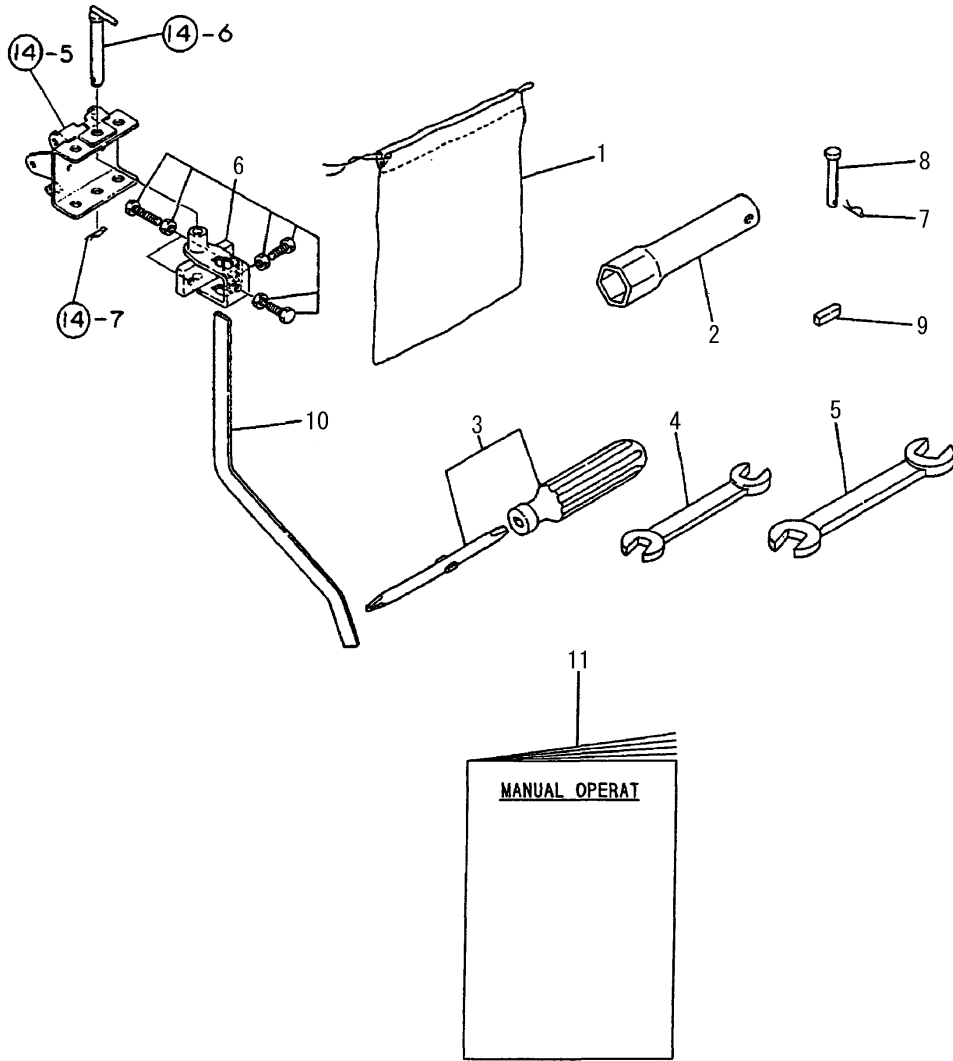
No.	Lev.	Parts No.	Description	Q'ty						I	R
				(A)	(B)	(C)	(D)	(E)	(F)		
1	1	1A2019-86110	LABEL 682,BELT COVER	1	1			1			
2	1	1A2019-86120	LABEL 782,BELT COVER				1	1		1	
3	1	1A2019-86150	MARK C	1		1					
4	1	1A2019-86170	MARK G		1		1				
5	1	1A2009-86200	LABEL,SUB-CHANGE	1	1	1	1	1	1	1	
6	1	1A2009-86250	LABEL,CHANGE	1	1	1	1	1	1	1	
7	1	1A2099-86300	LABEL,CVR.SAFETY	1	1	1	1	1	1	1	
8	1	1A2000-86310	LABEL,HANDLE FRAME	1	1	1	1	1	1	1	
9	1	1A2099-86320	LABEL,CAUTION	1	1	1	1	1	1	1	
10	1	1A2130-86320	LABEL,FUEL TANK	1	1	1	1	1	1	1	
11	1	1A2009-86340	LABEL,MAIN CLUTCH	1	1	1	1	1	1	1	
12	1	1A2099-86360	LABEL,FUEL COCK	1	1	1	1	1	1	1	
13	1	1A2009-86701	LABEL,OIL 2	1	1	1	1	1	1	1	
14	1	1A2099-86820	LABEL,ENG.OIL,ITA	1	1	1	1	1	1	1	
15	1	1A1103-88800	BAND L,MARK	1	1	1	1	1	1	1	
16	1	1A1103-88810	BAND R,MARK	1	1	1	1	1	1	1	
17	1	1A2138-86150	MARK P							1	1
18	1	1A6150-92550	MARK CE	1	1	1	1	1	1	1	W
				(A=FXXXXXX)	(B=F001148)	(C=FXXXXXX)	(D=FXXXXXX)	(E=F001018)	(F=F000456)		
18-1	1	1E1061-86610	MARK CE	1	1	1	1	1	1	1	N
				(A=FXXXXXX)	(B=F001148)	(C=FXXXXXX)	(D=FXXXXXX)	(E=F001373)	(F=F000701)		
18-2	1	1E1061-86610	MARK CE	1	1	1	1	1	1	1	Z
				(A=FXXXXXX)	(B=F001482)	(C=FXXXXXX)	(D=FXXXXXX)	(E=F001632)	(F=F000831)		
19	1	1A1479-86210	MARK (FL)							1	1

Remarks

(1)EXCLUSIVE FOR YK682FL,782FL.

N:Old $\begin{matrix} \leftarrow \text{Yes} \\ \text{No} \end{matrix}$ New, Q:Old $\begin{matrix} \leftarrow \text{No} \\ \text{Yes} \end{matrix}$ New, R:Old $\begin{matrix} \leftarrow \text{Yes} \\ \text{Yes} \end{matrix}$ New, S:Old $\begin{matrix} \leftarrow \text{No} \\ \text{No} \end{matrix}$ New, W:Add, Z:Discontinued, F:Interchangeable by set, K:Q'ty Change

Fig.19. LABELS & ACCESSORIES(ADD.ITEM)



(A)=YK682C
(B)=YK682G
(C)=YK782C

(D)=YK782G
(E)=YK682P,FL
(F)=YK782P,FL

No.	Lev.	Parts No.	Description	Q'ty						I	R
				(A)	(B)	(C)	(D)	(E)	(F)		
1	1	1A1750-83900	TOOL BAG	1	1	1	1	1	1		
2	1	160110-92700	WRENCH, 21 L140	1	1	1	1	1	1		
3	1	160330-92730	DRIVE, SCREW	1	1	1	1				
3-1	1	1D2040-87060	SCREWDRIVER,COMBINAT	1	1	1	1	1	1		R
		(A=FXXX)	(B=FXXX)	(C=FXXX)	(D=FXXX)						
4	1	28110-100120	SPANNER, 10X12	1	1	1	1	1	1		
5	1	28110-120140	SPANNER, 12X14	1	1	1	1	1	1		
6	1	7S0070-15000	UNIVIR SAL HITCH	1	1	1	1				
7	1	22372-060000	PIN, SNAP 6	2	2	2	2	2	2		
8	1	22487-060400	PIN 6X 40	2	2	2	2	2	2		
9	1	22550-050201	KEY, 5X 20	1	1	1	1	1	1		
10	1	1S0090-60000	BAR,RESISTANCE				1				
11	1	1A2009-88002	MANUAL	1	1	1	1	1	1		W
		(A=FZZZZZ)	(B=FZZZZZ)	(C=FZZZZZ)	(D=FZZZZZ)	(E=FZZZZZ)	(F=FZZZZZ)				

Parts No. Index

Parts No.	Fig. No.	Ref. No.
160110-92700	19	2
160330-92730	19	3
192040-56220	11	4
1A1040-81100	14	6
1A1103-88800	18	15
1A1103-88810	18	16
1A1104-28230	6	4
1A1104-56030	12	16
1A1105-16001	14	11
1A1105-23210	2	3
1A1105-57151	12	17
1A1220-28290	3	7
1A1470-10350	12	1
1A1470-20090	3	1
1A1470-20700	7	1
1A1470-40301	10	1
1A1470-40900	17	1
1A1479-23480	5	2
1A1479-55780	12	12
		27
1A1479-55790	12	14
		29
1A1479-86210	18	19
1A1490-10340	15	1
1A1540-46020	9	20
1A1735-55350	12	8
1A1750-40800	17	1 -1
1A1750-83900	19	1
1A1750-90050	10	12
	13	11
	16	5
1A1750-90150	10	13
	13	12
	16	6
1A1750-90160	12	19
1A2000-13100	2	10
1A2000-13190	2	11
1A2000-13200	2	12
1A2000-21100	3	2
1A2000-21110	3	3
1A2000-21150	3	4
1A2000-21160	3	5
1A2000-21200	3	6
1A2000-23012	4	2
1A2000-23020	4	4
1A2000-23070	4	5
1A2000-23100	4	17
1A2000-23200	4	13
1A2000-23251	4	14
1A2000-23301	5	1

Parts No.	Fig. No.	Ref. No.
1A2000-24520	5	6
1A2000-24530	5	7
1A2000-24550	5	8
1A2000-24600	5	9
1A2000-27010	6	1
1A2000-27051	6	2
1A2000-27100	6	3
1A2000-27530	7	2
1A2000-27600	7	3
1A2000-27650	7	4
1A2000-27700	7	5
1A2000-27750	7	6
1A2000-27800	7	7
1A2000-27840	7	8
1A2000-51000	10	2
1A2000-51100	10	3
1A2000-51101	10	3 -1
1A2000-51250	10	4
1A2000-51280	10	5
1A2000-51310	10	6
1A2000-51320	10	7
1A2000-51330	10	8
1A2000-51350	10	9
1A2000-51400	11	1
1A2000-51430	11	2
1A2000-51450	10	10
1A2000-55061	12	3
1A2000-55090	12	4
1A2000-55150	12	5
1A2000-55160	12	6
1A2000-55202	12	7
1A2000-55241	6	5
1A2000-55620	12	11
1A2000-55800	12	9
1A2000-55830	12	15
1A2000-61300	14	12
1A2000-62200	15	4
1A2000-62201	15	4 -1
1A2000-62300	15	5
1A2000-64100	16	1
1A2000-64210	16	3
1A2000-64220	16	4
1A2000-83100	17	2
1A2000-86310	18	8
1A2001-13050	2	9 -1
1A2001-13051	2	9 -2
1A2001-13100	2	14 -1
1A2001-15000	1	11 -1
1A2001-15001	1	11 -2
1A2001-21250	3	12 -1

Parts No.	Fig. No.	Ref. No.
1A2001-62400	15	14
1A2001-62401	15	14 -1
1A2009-13300	2	1
1A2009-13301	2	1 -1
1A2009-13341	2	2
1A2009-13342	2	2 -1
1A2009-13510	2	13
1A2009-13540	2	14
1A2009-15000	1	10 -1
1A2009-15001	1	10 -2
1A2009-23000	4	1
1A2009-23030	4	3
1A2009-23100	4	10
1A2009-23140	4	11
1A2009-24501	5	4
1A2009-24511	5	5
1A2009-51600	11	3
1A2009-55101	13	1
1A2009-55200	13	2
1A2009-55240	13	3
1A2009-55250	13	4
1A2009-55280	13	5
1A2009-55310	13	6
1A2009-55350	13	7
1A2009-55400	13	8
1A2009-55750	13	9
1A2009-55800	12	10
1A2009-61000	14	1
1A2009-61200	14	5
1A2009-62060	15	2
1A2009-62061	15	2 -1
1A2009-62100	15	3
1A2009-62200	15	3 -1
1A2009-62400	15	6
1A2009-62401	15	6 -1
1A2009-62420	15	7
1A2009-62421	15	7 -1
		7 -2
1A2009-62480	15	8
1A2009-86200	18	5
1A2009-86250	18	6
1A2009-86340	18	11
1A2009-86701	18	13
1A2009-88002	19	11
1A2015-31210	9	7
		16
1A2016-55151	13	1 -1
1A2016-55380	13	6 -1
1A2019-12000	1	8
1A2019-23060	4	16

Parts No.	Fig. No.	Ref. No.
1A2019-31010	9	1
1A2019-31020	9	10
1A2019-31100	9	19
1A2019-32000	8	1
1A2019-32010	8	2
1A2019-32100	8	3
1A2019-32110	8	4
1A2019-51700	11	9
1A2019-55250	13	23
1A2019-55750	13	24
1A2019-55800	12	25
1A2019-55820	12	26
1A2019-55850	12	30
1A2019-61200	14	16
1A2019-61350	14	18
1A2019-64200	16	2
1A2019-86110	18	1
1A2019-86120	18	2
1A2019-86150	18	3
1A2019-86170	18	4
1A2040-31030	9	2
1A2040-31040	9	11
1A2040-31050	9	3
		12
1A2040-31070	9	4
		13
1A2040-31090	9	5
		14
1A2040-31100	9	6
		15
1A2099-86300	18	7
1A2099-86320	18	9
1A2099-86360	18	12
1A2099-86820	18	14
1A2130-86320	18	10
1A2132-62050	15	16
1A2138-32090	8	7
1A2138-32150	8	8
1A2138-86150	18	17
1A6150-92550	18	18
1D1140-11420	1	1
		7
1D2040-87060	19	3 -1
1E1061-86610	18	18 -1
		18 -2
1E4060-10040	2	9
1E4060-74090	4	6
1E6102-84970	11	6
1E6150-56040	6	6
1E6570-65750	10	11

Parts No. Index

Parts No.	Fig. No.	Ref. No.
1E6570-65750	11	5
	12	18
1E7250-63300	13	10
1S0090-60000	19	10
1S0203-46000	14	6 -1
22117-120000	12	20
22137-060000	12	21
	13	13
	15	13
22137-080000	1	2
	13	14
	14	13
	15	9
		17
22137-120000	11	7
22157-060000	13	15
22157-080000	15	15
		15 -1
22217-060000	6	7
22217-080000	1	3
	17	3
22217-120000	11	8
22242-000150	2	4
		15
22242-000170	2	5
	4	7
22252-000350	2	6
22272-000060	2	16
	15	18
22360-060000	13	16
22360-160000	14	7
22372-060000	19	7
22417-160120	7	9
22417-200100	12	22
	13	17
22417-200120	7	10
22417-200180	12	23
	14	14
22486-080400	13	18
	14	15
22486-080450	9	21
22487-060120	7	11
22487-060400	19	8
22512-050300	1	9
22550-050201	19	9
23061-070015	10	14
23414-080000	3	8
24101-062024	4	12
24101-062034	4	8
24101-062054	5	10

Parts No.	Fig. No.	Ref. No.
24101-063024	4	15
24101-063034	5	3
24104-060034	2	7
24104-062024	2	8
24190-100001	6	8
24190-120001	5	11
24311-000100	7	12
24421-173208	4	9
25123-003701	1	10
25123-003801	1	11
26013-080144	15	10
26013-080162	1	12 -1
26013-080164	1	12
26106-060252	3	9
26106-060302	3	10
26106-080122	8	9
26107-080122	8	5
	15	11
26107-080162	13	19
		20
26107-080182	9	8
		17
26107-080502	3	11
		11 -1
26116-060162	6	9
26116-080552	14	17
26117-080122	3	12
26117-080402	1	4
26117-080452	1	5
26137-100502	14	2
26137-100602	14	3
26137-100702	2	17
26156-100552	14	8
26156-100952	14	9
26156-101202	10	15
26367-060002	3	13
	13	21
	15	12
26367-080002	3	14
		14 -1
	7	13
	8	6
		10
	9	9
		18
	15	5 -1
		5 -2
26367-100002	14	10
26377-100002	10	16
	14	4

Parts No.	Fig. No.	Ref. No.
26476-060142	6	10
	7	14
	12	24
	13	22
26717-080002	1	6
26757-080002	17	4
28110-100120	19	4
28110-120140	19	5
7C6220-52840	12	2
7C6220-52910	12	13
		28
7S0070-15000	19	6

Parts No.	Fig. No.	Ref. No.
-----------	----------	----------